



**U.S. ARMY CORPS OF ENGINEERS  
REGULATORY PROGRAM  
APPROVED JURISDICTIONAL DETERMINATION FORM (INTERIM)  
NAVIGABLE WATERS PROTECTION RULE**

**I. ADMINISTRATIVE INFORMATION**

Completion Date of Approved Jurisdictional Determination (AJD): 12/14/2020

ORM Number: SWF-2020-00318

Associated JDs: N/A

Review Area Location<sup>1</sup>: State/Territory: Texas City: Georgetown County/Parish/Borough: Williamson

Center Coordinates of Review Area: Latitude 30.68159 Longitude -97.83854

**II. FINDINGS**

**A. Summary:** Check all that apply. At least one box from the following list MUST be selected. Complete the corresponding sections/tables and summarize data sources.

- The review area is comprised entirely of dry land (i.e., there are no waters or water features, including wetlands, of any kind in the entire review area). Rationale: There are no water features in the evaluation area/parcel that meet the definition of waters of the US.
- There are “navigable waters of the United States” within Rivers and Harbors Act jurisdiction within the review area (complete table in Section II.B).
- There are “waters of the United States” within Clean Water Act jurisdiction within the review area (complete appropriate tables in Section II.C).
- There are waters or water features excluded from Clean Water Act jurisdiction within the review area (complete table in Section II.D).

**B. Rivers and Harbors Act of 1899 Section 10 (§ 10)<sup>2</sup>**

t§ 10 Name	§ 10 Size		§ 10 Criteria	Rationale for § 10 Determination
N/A.	N/A.	N/A	N/A.	N/A.

**C. Clean Water Act Section 404**

Territorial Seas and Traditional Navigable Waters ((a)(1) waters): <sup>3</sup>				
(a)(1) Name	(a)(1) Size		(a)(1) Criteria	Rationale for (a)(1) Determination
N/A.	N/A.	N/A.	N/A.	N/A.

Tributaries ((a)(2) waters):				
(a)(2) Name	(a)(2) Size		(a)(2) Criteria	Rationale for (a)(2) Determination
T-1	4678	linear feet	(a)(2) Intermittent tributary contributes surface water flow directly or indirectly to an (a)(1) water in a typical year.	See the map and report. Soves Branch of North San Gabriel River.
T-2	1334	linear feet	(a)(2) Intermittent tributary	See the map and report. Area had ponded water and indications of flow. Areas at upper limit of

<sup>1</sup> Map(s)/figure(s) are attached to the AJD provided to the requestor.

<sup>2</sup> If the navigable water is not subject to the ebb and flow of the tide or included on the District’s list of Rivers and Harbors Act Section 10 navigable waters list, do NOT use this document to make the determination. The District must continue to follow the procedure outlined in 33 CFR part 329.14 to make a Rivers and Harbors Act Section 10 navigability determination.

<sup>3</sup> A stand-alone TNW determination is completed independently of a request for an AJD. A stand-alone TNW determination is conducted for a specific segment of river or stream or other type of waterbody, such as a lake, where upstream or downstream limits or lake borders are established. A stand-alone TNW determination should be completed following applicable guidance and should NOT be documented on the AJD Form.



**U.S. ARMY CORPS OF ENGINEERS  
REGULATORY PROGRAM  
APPROVED JURISDICTIONAL DETERMINATION FORM (INTERIM)  
NAVIGABLE WATERS PROTECTION RULE**

Tributaries ((a)(2) waters):				
(a)(2) Name	(a)(2) Size		(a)(2) Criteria	Rationale for (a)(2) Determination
			contributes surface water flow directly or indirectly to an (a)(1) water in a typical year.	intermittent reach had button bush present in the channel and on fringe.
T-10	6486	linear feet	(a)(2) Intermittent tributary contributes surface water flow directly or indirectly to an (a)(1) water in a typical year.	See the map and report – this is the Middle Fork of the San Gabriel River and was flowing during site visit

Lakes and ponds, and impoundments of jurisdictional waters ((a)(3) waters):				
(a)(3) Name	(a)(3) Size		(a)(3) Criteria	Rationale for (a)(3) Determination
N/A.	N/A.	N/A.	N/A.	N/A.

Adjacent wetlands ((a)(4) waters):				
(a)(4) Name	(a)(4) Size		(a)(4) Criteria	Rationale for (a)(4) Determination
Wet 4	0.25	acre(s)	(a)(4) Wetland abuts an (a)(1)-(a)(3) water.	See map and report

**D. Excluded Waters or Features**

Excluded waters ((b)(1) – (b)(12)): <sup>4</sup>				
Exclusion Name	Exclusion Size		Exclusion <sup>5</sup>	Rationale for Exclusion Determination
T-3	188	linear feet	(b)(3) Ephemeral feature, including an ephemeral stream, swale, gully, rill, or pool.	Self evident
T-4	1965	linear feet	(b)(3) Ephemeral feature, including an ephemeral stream, swale, gully, rill, or pool.	Self evident
T-5	376	linear feet	(b)(3) Ephemeral feature, including an ephemeral	Self evident

<sup>4</sup> Some excluded waters, such as (b)(2) and (b)(4), may not be specifically identified on the AJD form unless a requestor specifically asks a Corps district to do so. Corps districts may, in case-by-case instances, choose to identify some or all of these waters within the review area.

<sup>5</sup> Because of the broad nature of the (b)(1) exclusion and in an effort to collect data on specific types of waters that would be covered by the (b)(1) exclusion, four sub-categories of (b)(1) exclusions were administratively created for the purposes of the AJD Form. These four sub-categories are not new exclusions, but are simply administrative distinctions and remain (b)(1) exclusions as defined by the NWPR.



**U.S. ARMY CORPS OF ENGINEERS  
REGULATORY PROGRAM  
APPROVED JURISDICTIONAL DETERMINATION FORM (INTERIM)  
NAVIGABLE WATERS PROTECTION RULE**

Excluded waters ((b)(1) – (b)(12)): <sup>4</sup>			
Exclusion Name	Exclusion Size	Exclusion <sup>5</sup>	Rationale for Exclusion Determination
		stream, swale, gully, rill, or pool.	
T-6	3377	linear feet	(b)(3) Ephemeral feature, including an ephemeral stream, swale, gully, rill, or pool. Has larger drainage area but site visit revealed no groundwater or other hydrology sources. Appears to flow only with precip. Becomes intermittent at confluence with T-7.
T-7	2572	linear feet	(b)(3) Ephemeral feature, including an ephemeral stream, swale, gully, rill, or pool. Has larger drainage area but site visit revealed no groundwater or other hydrology sources. Appears to flow only with precip. Becomes intermittent at confluence with T-6. Upper part of Soves Branch of N. San Gabriel River.
T-8	1063	linear feet	(b)(3) Ephemeral feature, including an ephemeral stream, swale, gully, rill, or pool. Area downstream manifests buttonbush and areas of ponding while upstream areas are clearly drier conditions. Road ROW areas are false indicator. Estimated location of where trib goes from ephemeral to intermittent.
T-9	2977	linear feet	(b)(3) Ephemeral feature, including an ephemeral stream, swale, gully, rill, or pool. Self evident
T-11	563	linear feet	(b)(3) Ephemeral feature, including an ephemeral stream, swale, gully, rill, or pool. Self evident
T-12	2219	linear feet	(b)(3) Ephemeral feature, including an ephemeral stream, swale, gully, rill, or pool. Self evident
T-13	1150	linear feet	(b)(3) Ephemeral feature, including an ephemeral stream, swale, gully, rill, or pool. Self evident
T-14	6725	linear feet	(b)(3) Ephemeral feature, including an ephemeral stream, swale, gully, rill, or pool. Self evident
T-15	1766	linear feet	(b)(3) Ephemeral feature, including an ephemeral stream, swale, gully, rill, or pool. Self evident



**U.S. ARMY CORPS OF ENGINEERS  
REGULATORY PROGRAM  
APPROVED JURISDICTIONAL DETERMINATION FORM (INTERIM)  
NAVIGABLE WATERS PROTECTION RULE**

Excluded waters ((b)(1) – (b)(12)): <sup>4</sup>				
Exclusion Name	Exclusion Size		Exclusion <sup>5</sup>	Rationale for Exclusion Determination
T-16	2170	linear feet	(b)(3) Ephemeral feature, including an ephemeral stream, swale, gully, rill, or pool.	Self evident
Wet 2	1.43	acres	(b)(1) Non-adjacent wetland.	Actually a pond with wetland fringe on ephemeral stream
Wet 3	2.96	acres	(b)(1) Non-adjacent wetland	Actually a pond with wetland fringe on ephemeral stream
P-1	.12	acres	(b)(8) Artificial lake/pond constructed or excavated in upland or a non-jurisdictional water, so long as the artificial lake or pond is not an impoundment of a jurisdictional water that meets (c)(6).	Pond constructed in upland
P-2	1.74	acres	(b)(8) Artificial lake/pond constructed or excavated in upland or a non-jurisdictional water, so long as the artificial lake or pond is not an impoundment of a jurisdictional water that meets (c)(6).	Pond constructed on ephemeral stream
P-3	.2	acres	(b)(8) Artificial lake/pond constructed or excavated in upland or a non-jurisdictional water, so long as the artificial lake or pond is not an impoundment of a jurisdictional water that meets (c)(6).	Pond constructed on ephemeral stream



**U.S. ARMY CORPS OF ENGINEERS  
REGULATORY PROGRAM  
APPROVED JURISDICTIONAL DETERMINATION FORM (INTERIM)  
NAVIGABLE WATERS PROTECTION RULE**

Excluded waters ((b)(1) – (b)(12)): <sup>4</sup>			
Exclusion Name	Exclusion Size	Exclusion <sup>5</sup>	Rationale for Exclusion Determination
P-4	.21	acres	(b)(8) Artificial lake/pond constructed or excavated in upland or a non-jurisdictional water, so long as the artificial lake or pond is not an impoundment of a jurisdictional water that meets (c)(6). Pond constructed in upland
P-5	.1	acres	(b)(8) Artificial lake/pond constructed or excavated in upland or a non-jurisdictional water, so long as the artificial lake or pond is not an impoundment of a jurisdictional water that meets (c)(6). Pond constructed in upland
P-6	4.9	acres	(b)(8) Artificial lake/pond constructed or excavated in upland or a non-jurisdictional water, so long as the artificial lake or pond is not an impoundment of a jurisdictional water that meets (c)(6). Pond constructed in upland
P-7	.11	acres	(b)(8) Artificial lake/pond constructed or excavated in upland or a non-jurisdictional water, so long as the artificial lake or pond is not an Pond constructed on ephemeral stream



**U.S. ARMY CORPS OF ENGINEERS  
REGULATORY PROGRAM  
APPROVED JURISDICTIONAL DETERMINATION FORM (INTERIM)  
NAVIGABLE WATERS PROTECTION RULE**

Excluded waters ((b)(1) – (b)(12)): <sup>4</sup>				
Exclusion Name	Exclusion Size	Exclusion <sup>5</sup>	Rationale for Exclusion Determination	
			impoundment of a jurisdictional water that meets (c)(6).	
P-8	.12	acres	(b)(8) Artificial lake/pond constructed or excavated in upland or a non-jurisdictional water, so long as the artificial lake or pond is not an impoundment of a jurisdictional water that meets (c)(6).	Pond constructed on ephemeral stream
P-9	.3	acres	(b)(8) Artificial lake/pond constructed or excavated in upland or a non-jurisdictional water, so long as the artificial lake or pond is not an impoundment of a jurisdictional water that meets (c)(6).	Pond constructed in upland
P-10	.14	acres	(b)(8) Artificial lake/pond constructed or excavated in upland or a non-jurisdictional water, so long as the artificial lake or pond is not an impoundment of a jurisdictional water that meets (c)(6).	Pond constructed on ephemeral stream

**III. SUPPORTING INFORMATION**

**A. Select/enter all resources** that were used to aid in this determination and attach data/maps to this document and/or references/citations in the administrative record, as appropriate.



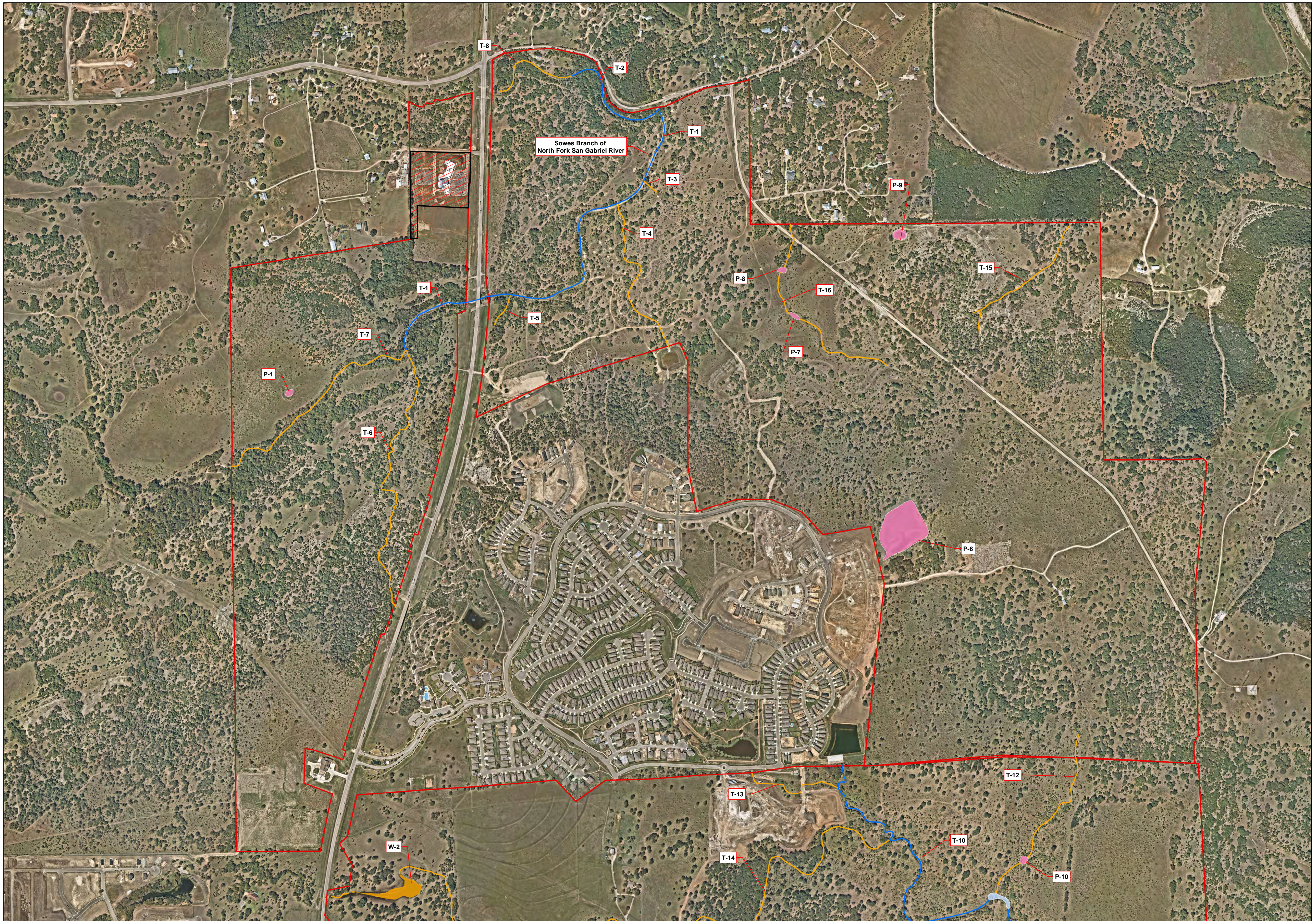
**U.S. ARMY CORPS OF ENGINEERS  
REGULATORY PROGRAM  
APPROVED JURISDICTIONAL DETERMINATION FORM (INTERIM)  
NAVIGABLE WATERS PROTECTION RULE**

- Information submitted by, or on behalf of, the applicant/consultant: [See the file.](#)  
This information [is](#) sufficient for purposes of this AJD.  
Rationale: [N/A or describe rationale for insufficiency \(including partial insufficiency\).](#)
- Data sheets prepared by the Corps: [Title\(s\) and/or date\(s\).](#)
- Photographs: [Select. Title\(s\) and/or date\(s\).](#)
- Corps site visit(s) conducted on: [14 Oct 2020](#)
- Previous Jurisdictional Determinations (AJDs or PJDs): [ORM Number\(s\) and date\(s\).](#)
- Antecedent Precipitation Tool: [provide detailed discussion in Section III.B.](#)
- USDA NRCS Soil Survey: [Title\(s\) and/or date\(s\).](#)
- USFWS NWI maps: [Title\(s\) and/or date\(s\).](#)
- USGS topographic maps: [Title\(s\) and/or date\(s\).](#)

**Other data sources used to aid in this determination:**

Data Source (select)	Name and/or date and other relevant information
<a href="#">USGS Sources</a>	<a href="#">N/A.</a>
<a href="#">USDA Sources</a>	<a href="#">N/A.</a>
<a href="#">NOAA Sources</a>	<a href="#">N/A.</a>
<a href="#">USACE Sources</a>	<a href="#">N/A.</a>
<a href="#">State/Local/Tribal Sources</a>	<a href="#">N/A.</a>
<a href="#">Other Sources</a>	<a href="#">N/A.</a>

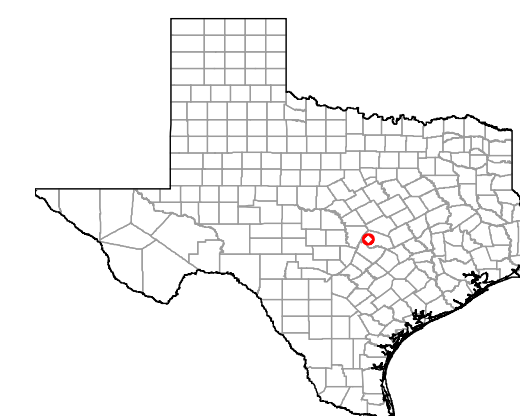
- B. Typical year assessment(s):** [Ran APT and results show that site visits \(Jun 24 and Oct 14, 2020\) were conducted in typical year conditions. This, coupled with on site determination allowed for revisions to delineation to occur. Boundary revised by consultant to eliminate road side ditches, swales and stormwater detention ponds from delineation.](#)
- C. Additional comments to support AJD:** [Spending more time indentifying and excluding features than focusing on waters of the US.](#)



Date: 12/02/2020  
 Drawn: SBF  
 HJN NO: 200130.001 WD  
 Source: Nearmap, 2020

Legend	
	Subject Site
	Out Parcel
	Intermittent Tributary
	Intermittent Pool
<b>Non-Jurisdictional Aquatic Feature</b>	
	Ephemeral Tributary
	Non - Jurisdictional Pond
	Wetland

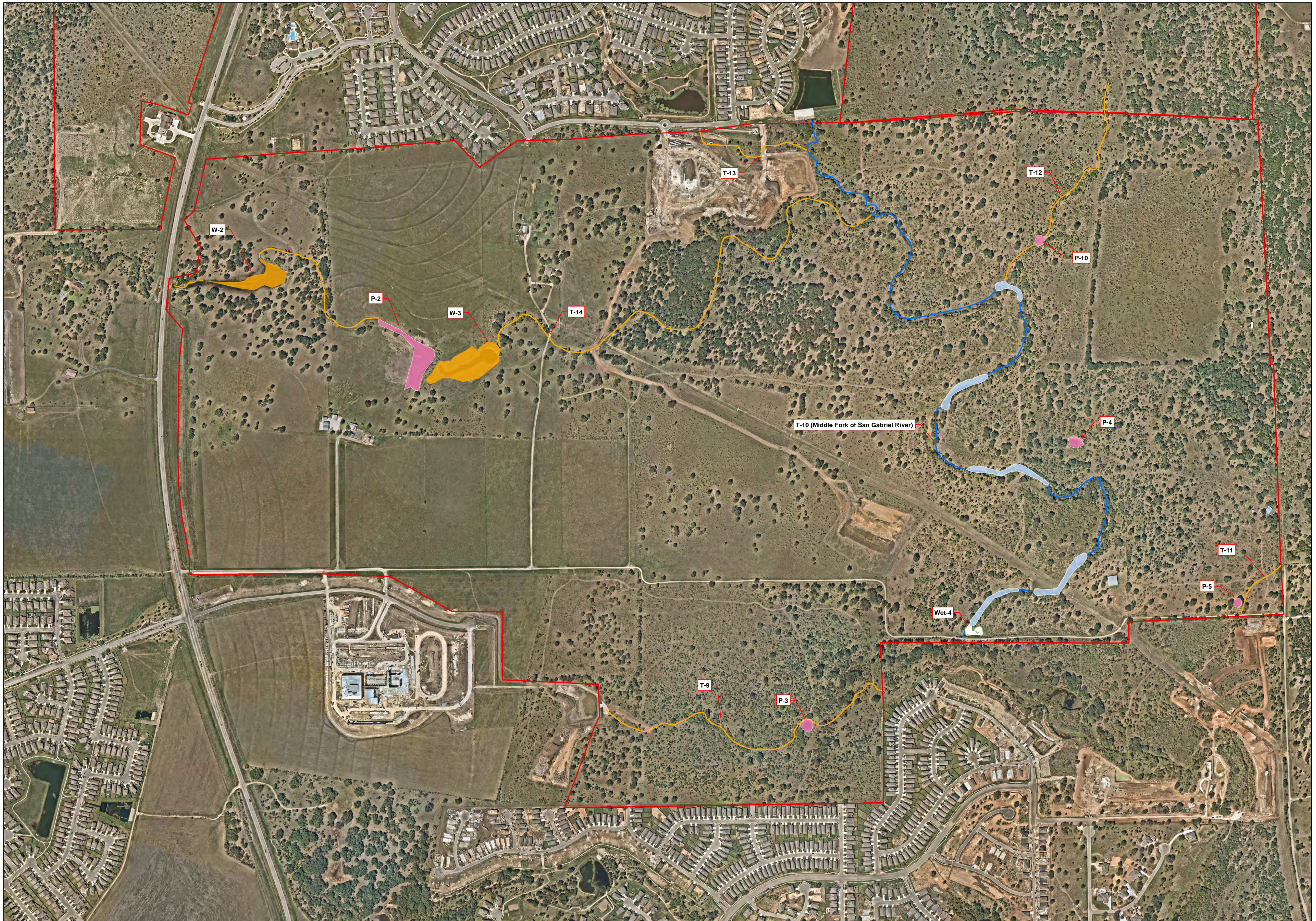
**Figure 6**  
**Sheet 1 of 2**  
 Revised Jurisdictional Delineation Map  
 Santa Rita Ranch  
 TX 29 and Ronald W Reagan Blvd  
 Georgetown, Williamson County, Texas



0 250 500  
 Feet

Scale: 1" = 500'





Legend	
<span style="border: 1px solid red; display: inline-block; width: 10px; height: 10px;"></span> Subject Site	<b>Non-jurisdictional Aquatic Feature</b>
<span style="border-bottom: 1px solid blue; width: 10px; display: inline-block;"></span> Jurisdictional Aquatic Feature	<span style="border-bottom: 1px solid orange; width: 10px; display: inline-block;"></span> Ephemeral Tributary
<span style="border-bottom: 1px solid lightblue; width: 10px; display: inline-block;"></span> Intermittent Tributary	<span style="background-color: pink; width: 10px; height: 10px; display: inline-block;"></span> Non - Jurisdictional Pond
<span style="background-color: lightblue; width: 10px; height: 10px; display: inline-block;"></span> Intermittent Pool	<span style="background-color: orange; width: 10px; height: 10px; display: inline-block;"></span> Wetland
<span style="border: 1px dashed green; width: 10px; height: 10px; display: inline-block;"></span> Jurisdictional Wetland	

**Figure 6**  
**Sheet 2 of 2**  
 Revised Jurisdictional Delineation Map  
 Santa Rita Ranch  
 TX 29 and Ronald W Reagan Blvd  
 Georgetown, Williamson County, Texas

